

Scenic Terrace South Community Development District
219 East Livingston Street- Orlando – Florida – 32801

January 27, 2026

Town of Lake Hamilton- Mayor's Office
100 Smith Avenue
PO Box 126
Lake Hamilton, Florida 33851
Attn: Phillis Hall- Mayor

Re: Scenic Terrace South Community Development District Initial Public Facilities Report

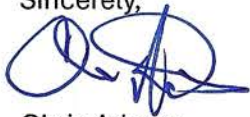
Dear Ms. Hall;

Pursuant to Section 189.008, Florida Statutes (the "Statute"), each independent special District in Florida is required to submit an initial public facilities report (the "Report") to each local general-purpose government in which it is located within the first year of establishment. Enclosed to comply with the requirements of the Statute is the Report for the Scenic Terrace South Community Development District (the "District"), dated January 26, 2026.

It is my understanding that the next "Special District's due date for filing the Report with the Local General-Purpose Government" for Lake Hamilton, Florida is May 1, 2031 (the "Submittal Date"). The District will send annual update letter identifying any changes to the Report prior to the next Submittal Date when a fully updated Report will be submitted.

Should you have any questions or comments, please feel free to contact me at cadams@gmstnn.com or phone (865) 250-1617.

Sincerely,



Chris Adams

Compliance Administrator

cc: District Manager
District Counsel
District Engineer

Exhibit A
Public Facilities Report

**SCENIC TERRACE SOUTH COMMUNITY DEVELOPMENT DISTRICT
INITIAL PUBLIC FACILITIES REPORT – DATED JANUARY 26, 2026**

I. PURPOSE AND SCOPE

This Initial Public Facilities Report attached as **Exhibit A**, is provided for the Scenic Terrace South Community Development District (the “**District**”) to comply with the requirement of Section 189.08, *Florida Statutes*, regarding the preparation and filing of a Special District Public Facilities Report.

II. PUBLIC FACILITIES

The District may currently own, operate or maintain certain of the public improvements comprising a portion of the District’s “**Capital Improvement Plan**,” as described in the District’s *Engineer’s Report for the Scenic Terrace South Community Development District* dated October 13, 2021, (the “**Engineer’s Report**”), a copy of which is attached hereto as **Exhibit B**. The public improvements are located within the District (or adjacent thereto) and are intended to have the capacity necessary to provide services to the planned units listed in the Engineer’s Report.

III. PROPOSED EXPANSIONS (7 YEAR HORIZON)

The District does not have plans to build, improve, or expand public improvements or community facilities within the District over the next seven years. Provided however, the district may construct or acquire components of the Capital Improvement Plan within the District’s boundaries.

IV. REPLACEMENT OF FACILITIES (10 YEAR HORIZON)

The District does not propose to replace any public facilities within the next 10 years.

V. CHAPTER 189, FLORIDA STATUTES

Attached as Exhibit C is a copy of Section 189.08, Florida Statutes for reference purposes only.

Exhibit B
Engineer's Report



Scenic Terrace South Community Development District

Engineer's Report

October 13, 2021

SUBMITTED BY:

Dewberry Engineers Inc.
800 North Magnolia Avenue
Suite 1000
Orlando, Florida 32803
407-843-5120

TABLE OF CONTENTS

Introduction	2
Purpose and Scope	3
The Development	3
Capital Improvements	3
Stormwater Management Facilities.....	4
Public Roadways	4
Water and Wastewater Facilities	5
Off-Site Utilities	5
Amenities and Parks	5
Electric Utilities and Lighting	5
Entry Features.....	5
Miscellaneous.....	6
Permitting	6
Recommendation	6
Report Modification	6
Summary and Conclusion	7
Engineer’s Certification	7
List of Exhibits	
Aerial Location Map	Exhibit 1
Legal Description	Exhibit 2
District Boundary Map	Exhibit 3
Land Use Map	Exhibit 4
Zoning Map	Exhibit 5
Utility Location Map and Drainage Flow Pattern Map	Exhibit 6
Summary of District Facilities.....	Exhibit 7A
Summary of Opinion of Probable Cost	Exhibit 7B
Overall Site Plan.....	Exhibit 8

COMPANY CONFIDENTIAL AND PROPRIETARY: Use or disclosure of data contained on this sheet is subject to restriction on the title page of this proposal.

Scenic Terrace South Community Development District

INTRODUCTION

The Scenic Terrace South Community Development District (the "District" or "CDD") is located at Scenic Highway (SR 17) and Hughes Road and within the Town of Lake Hamilton (the "Town"). The District currently contains approximately 206.56 acres and is expected to consist of 744 residential lots of various sizes for single-family dwellings with recreation/amenity areas, parks, and associated infrastructure for the development.

The CDD was established under Town Ordinance No. O-21-19, which was approved by the Town of Lake Hamilton Commission on October 5, 2021. The District will own and operate the public roadways, utility systems, and stormwater management facilities, as well as the landscape, irrigation, signage, and recreational facilities within the development.

The Master Developer ("Developer") Atlantic Blue Communities II, LLC is based in Lake Wales, Florida. The Development is approved as a Planned Unit Development (PUD) for residential units and is divided into two phases. A land use summary is presented in Table 1.

Public improvements and facilities financed, acquired, and/or constructed by the District will be designed and constructed to conform to regulatory criteria from the Town, county, Southwest Florida Water Management District (SWFWMD), and other applicable agencies with regulatory jurisdiction over the development, an overall estimate of the probable cost of the public improvements are provided in Exhibit 7 of this report.

The Capital Improvement Plan (CIP) or this Engineer's Report reflects the present intentions of the District and the landowners. It should be noted that the location of the proposed facilities and improvements may be adjusted during the final design, permitting, and implementation phases. It should also be noted that these modifications are not expected to diminish the benefits to the property within the District. The District reserves the right to make reasonable adjustments to the development plan to meet applicable regulatory requirements of agencies with jurisdiction over the development while maintaining a comparable level of benefits to the lands served by the improvements. Changes and modifications are expected as changes in regulatory criteria are implemented.

TABLE 1	AREA
Master Stormwater System	45.85 ac
Residential Land (Single-Family 40-ft and 50-ft Lots)	87.27 ac
Roadways Infrastructure & Public Facilities	60.18 ac
Open Space/Conservation Areas/Parks	13.26 ac
TOTAL	206.56 ac

TABLE 3 LOT TYPES		
LOT TYPE	UNITS	AREA (AC)
40-ft Lots	264	26.67 ac
50-ft Lots	480	60.60 ac
TOTAL LOTS IN THE DISTRICT	744	87.27 ac

Implementation of any proposed facilities or improvements outlined in this report requires written approval from the District's Board of Supervisors. Estimated costs outlined in this report are based on the best available information, which includes but is not limited to previous experience with similar projects. Actual costs could be different than estimates as final engineering and specific field conditions may affect construction costs.

All roadway improvements including sidewalks in the right-of-way and storm drainage collection systems (from the curb inlets to their connection to the stormwater ponds) within the development will be maintained by the District. Water distribution and wastewater collection systems (gravity lines, force mains, and lift stations) will be dedicated to the Town of Lake Hamilton and Haines City for ownership and maintenance upon completion.

PURPOSE AND SCOPE

The purpose of this report is to provide engineering support for the funding of the proposed improvements within the District. This report will identify the proposed public infrastructure to be constructed or acquired by the District along with an Opinion of Probable Construction Costs. The District will finance, construct, acquire, operate, and maintain all or specific portions of the proposed public infrastructure.

The predominant portion of this report provides descriptions of the proposed public infrastructure improvements, determination of estimated probable construction costs, and the corresponding benefits associated with the implementation of the described improvements. Detailed site construction plans and specifications have not yet been completed and permitted for the improvements described herein. The engineer has considered and, in specific instances, has relied upon the information and documentation prepared or supplied by others to prepare this Engineer's Report.

THE DEVELOPMENT

The development will consist of a total of 744 residential units and associated infrastructure. The development is a planned residential community consisting of 206.56 acres on the east and west sides of SR 17 Scenic Highway and the north and south sides of Hughes Road. The District is located within the Town of Lake Hamilton in Polk County. The future land use is Residential Lands – 5 (RL-5) and zoning is Planned Unit Development (PUD). The development will be constructed in two phases.

CAPITAL IMPROVEMENTS

The CIP consists of public infrastructure in the development. The primary portions of the CIP will provide for stormwater pond construction, roadways built to an urban roadway typical section, water, and sewer facilities including a lift station, and off-site improvements (including turn lanes and extension of water and sewer mains to serve the development).

There will also be stormwater structures and conveyance culverts within the CIP, which will outfall into the various on-site stormwater ponds. These structures and pond areas comprise the overall stormwater facilities of the CIP. Installation of the water distribution and wastewater collection system will also occur at this time as well as the lift

station serving the project. Below-ground installation of telecommunications and cable television will occur but will not be funded by the District. Installation of streetlights and undergrounding of power within the public rights-of-way or easements will be funded by the District.

As a part of the recreational component of the CIP, there are conservation areas that can serve as passive parks within the development that are available to the public for utilization of the facilities. The recreational areas will have connectivity via sidewalks to the other portions of the District. The recreational areas will be accessed by the public roadways and sidewalks.

CAPITAL IMPROVEMENT PLAN COMPONENTS

The CIP for the District includes the following:

Stormwater Management Facilities

Stormwater management facilities consisting of storm conveyance systems and retention/detention ponds are contained within the District boundaries. Stormwater will be discharged via roadway curb and gutter and storm inlets. Storm culverts convey the runoff into the proposed retention ponds for water quality treatment and attenuation. The proposed stormwater systems will utilize dry retention and wet retention for biological pollutant assimilation to achieve water quality treatment. The design criteria for the District's stormwater treatment systems are regulated by the Town, the county, and SWFWMD. There are very few conservation areas throughout the District, which will be preserved in the existing condition and will accept stormwater discharges from our ponds as shown in Exhibit 6.

Federal Emergency Management Agency Flood Insurance Rate Map (FEMA FIRM) Panel Numbers 12105C0380G and 12105C0390G demonstrates that the property is located within Flood Zones AE and X. Based on this information and the site topography, it appears that 100-year compensation will be done in areas where we will impact existing depressions throughout the development and the 100-year flood volumes will be compensated as it is required the county and FEMA.

During the construction of stormwater management facilities, utilities, and roadway improvements the contractor will be required to adhere to a Stormwater Pollution Prevention Plan (SWPPP) as required by the FDEP as delegated by the Environmental Protection Agency (EPA). The SWPPP will be prepared to depict the proposed recommended locations of required erosion control measures and staked turbidity barriers specifically along the downgradient side of any proposed construction activity. The site contractor will be required to provide the necessary reporting as required by the National Pollutant Discharge Elimination System (NPDES) General Permit with erosion control, its maintenance, and any rainfall events that occur during construction activity.

Public Roadways

The proposed public roadway sections include a 24-foot roadway consisting of asphalt and with Miami curbs or Type F curb and gutter on both sides along with a 50-foot right-of-way. The proposed roadway section will consist of stabilized subgrade, a lime rock, crushed concrete, or cement-treated base and asphalt type roadway wearing surface. The proposed curb is to be 2-feet wide and placed along the edge of the proposed roadway section for purposes of protecting the integrity of the pavement, and also to provide stormwater runoff conveyance to the proposed stormwater inlets.

The proposed roadways will also require signing and pavement markings within the public rights-of-way, as well as street signs depicting street name identifications, and addressing, which will be utilized by the residents and public. As stated above, the District's funding of roadway construction will occur for all public roadways.

Water and Wastewater Facilities

A potable drinking water system inclusive of a water main, gate valves, fire hydrants, and appurtenances will be installed for the District. The water service provider will be the Town of Lake Hamilton or Haines City Public Utilities. The water system will be designed to provide an equally distributed system that provides redundancy to the system. These facilities will be installed within the proposed public rights-of-way and will provide potable drinking water (domestic) and fire protection services to serve the entire District.

A domestic wastewater collection system inclusive of gravity sanitary sewer mains and sewer laterals will be installed. The gravity sanitary sewer mains will be a minimum of eight (8)-inch diameter PVC pipe systems. The gravity sanitary sewer lines will be placed inside of the proposed public rights-of-way, under the proposed paved roadways. Sewer laterals will branch off from these sewer lines to serve the development. Lift stations are anticipated for this CIP. Flow from the lift station shall be connected to a proposed force main that will pump to an existing force main that will connect to the Town's or Haines City's wastewater treatment facility.

The Town of Lake Hamilton Public Utilities and/or Haines City will provide the reclaimed water to be used for all irrigation within the CDD. The reclaimed water will be funded by the District and installed onsite within the roadways to provide for irrigation within the public right-of-way or any areas needing irrigation. Any water, sewer, or reclaim water pipes or facilities placed on private property will not be publicly funded.

Off-Site Improvements

The District will provide funding for the anticipated turn lanes at the development entrances. The site construction activities associated with the CIP are anticipated to be completed in the next two (2) to three (3) years. Upon completion of each phase, the improvements will be through the required inspections as well as final certifications of completions will be obtained from SWFWMD, Polk County Health Department (water distribution system), FDEP (wastewater collection), Town of Lake Hamilton Public Utilities, and the county.

Amenities and Parks

The District will provide funding for an amenity center to include the following: parking areas, pavilion with restroom facilities, pool, all-purpose playfields, and walking trails between the phases and villages to provide connectivity to the various amenity centers within the CDD. In addition, there will be passive parks throughout the development, which will include benches and walking trails.

Electric Utilities and Lighting

The electric distribution system thru the District is currently planned to be underground, The District presently intends to fund and construct the undergrounding of the electric conduits, transformer/cabinet pads, and electric manholes required by Duke Energy (Duke). Electric facilities will be maintained by Duke after the dedication, with Duke providing underground electrical service to the Development. The CDD presently intends to fund the cost to purchase and install the street lighting along the internal roadways within the CDD. These lights will be owned, operated, and maintained by Duke after the dedication, with the District funding maintenance services.

Entry Feature

Landscaping, irrigation, entry features, and walls at the entrances and along the outside boundary of the Development will be provided by the District. The irrigation system will use an irrigation well. The well and irrigation water mains to the various phases of the development will be constructed and acquired by the CDD with District funds and operated and maintained by the CDD. Landscaping for the roadways will consist of sod, annual flowers, shrubs, ground cover,

and trees for the internal roadways within the CDD. Perimeter fencing will be provided at the site entrances and perimeters. These items will be funded, owned, and maintained by the CDD.

Miscellaneous

The stormwater improvements, landscaping and irrigation, recreational improvements, street lighting, and certain permits and professional fees as described in this report are being financed by the District to benefit all of the developable real property within the District. The construction and maintenance of the proposed public improvements will benefit the development for the intended use as a single-family/residential planned development.

Permitting

Construction permits for all phases are required and include the SWFWMD ERP, Polk County Health Department, FDEP, and Town of Lake Hamilton construction plan approval.

Following is a summary of required permits obtained or pending approval for the construction of the public infrastructure improvements for the District:

Phase 1	
Permits/Approvals	Approval/Expected Date
Zoning Approval	Residential Planned Unit Development (RPUD) – Approved June 1, 2021
Preliminary Plat	To be obtained
SWFWMD ERP	To be obtained
Construction Permits	To be obtained
Town of Lake Hamilton Public Utilities and/or Haines City- Water/Sewer	To be obtained
FDEP Sanitary Sewer General Permit	To be obtained
FDEP Water Distribution General Permit	To be obtained
FDEP NOI	To be obtained

RECOMMENDATION

As previously explained within this report, the public infrastructure, as described, is necessary for the development and functional operation as required by the Town. The site planning, engineering design, and construction plans for the infrastructure are in accordance with the applicable requirements of the Town of Lake Hamilton, Polk County, and the SWFWMD. It should be noted that the infrastructure will provide its intended use and function so long as the construction and installation are in substantial conformance with the design construction plans and regulatory permits.

Items utilized in the Opinion of Probable Costs for this report are based upon the proposed plan infrastructure as shown on construction drawings incorporating specifications in the most current SWFWMD, Polk County, and the Town regulations.

REPORT MODIFICATION

During the development and implementation of the designed public infrastructure improvements, it may be necessary to make modifications and/or deviations to the plans. However, if such deviations and/or revisions do not change the overall

primary objective of the plan for such improvements, then the cost differences would not materially affect the proposed construction cost estimates.

SUMMARY AND CONCLUSION

The improvements as outlined are necessary for the functional development of the Project. The Project is being designed in accordance with current government regulatory requirements. The Project will serve its intended function provided the construction is in substantial compliance with the design. Items of construction for the Project are based upon current development plans.

ENGINEER'S CERTIFICATION

It is our professional opinion that the public infrastructure costs for the CIP provided in this report are reasonable to complete the construction of the public infrastructure improvements. Furthermore, the public infrastructure improvements will benefit and add value to lands within the District and the value is at least the same as the costs for said improvements.

The Opinion of Probable Costs for the public infrastructure improvements is only an estimate and is not a guaranteed maximum price. The estimated costs are based upon current unit prices and on our experience with ongoing and similar projects and basis in the county and the Town. However; labor market, future costs of equipment; materials, changes to the regulatory permitting agencies' activities, and the actual construction processes employed by the chosen site contractor are beyond the engineer's control. Due to this inherent opportunity for changes (upward or downward) in the construction costs, the total, final construction cost may be more or less than this estimate.

Based upon the presumption that the CIP construction continues in a timely manner, it is our opinion that the costs of the CIP proposed represent a system of improvements benefitting all developable property located within the District, are fair and reasonable, and that the District-funded improvements are assessable improvements within the meaning of Chapter 190, F.S. We have no reason to believe that the CIP improvements cannot be constructed at the cost described in this report. We expect the improvements to be constructed or acquired by the District with bond proceeds, as indicated within this report. We believe that the District will be well served by the improvements discussed in this report.

I hereby certify that the foregoing is a true and correct copy of the engineer's report for the Scenic Terrace South Community Development District.



Reinardo Malavé, P.E.
Florida License No. 31588

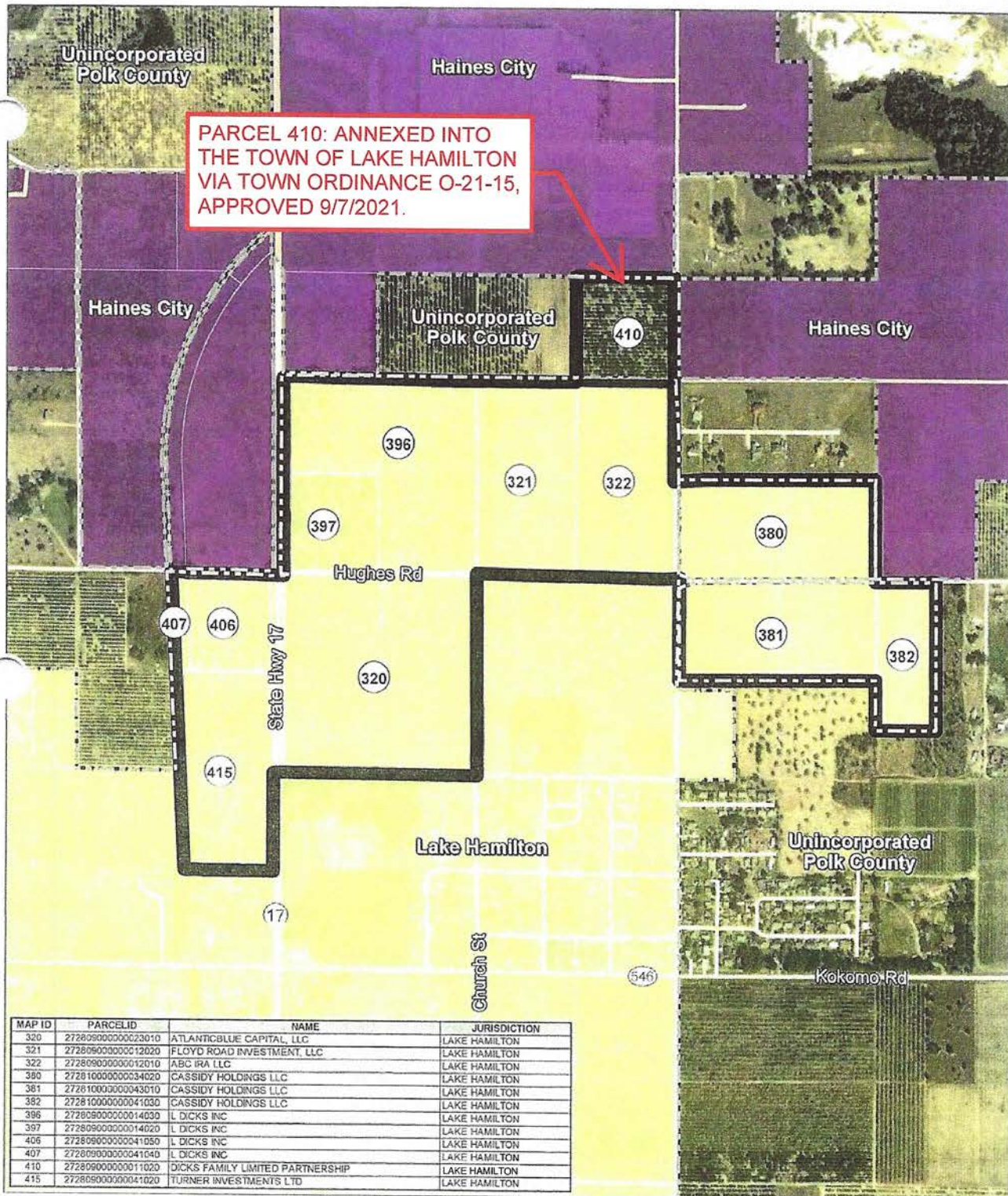
**SCENIC TERRACE SOUTH CDD
EXHIBIT 2 – LEGAL DESCRIPTION**

A PORTION OF LAND LYING IN SECTION 9 AND 10, TOWNSHIP 28 SOUTH, RANGE 27 EAST, POLK COUNTY, FLORIDA, BEING MORE PARTICULARLY DESCRIBED AS FOLLOWS:

COMMENCE AT THE NORTH 1/4 CORNER OF SAID SECTION 9, THENCE RUN SOUTH 00°36'52" EAST ALONG THE WEST LINE OF THE NORTHEAST 1/4 FOR A DISTANCE OF 1371.46 FEET; THENCE DEPARTING SAID WEST LINE RUN NORTH 89°23'08" EAST FOR A DISTANCE OF 37.81 FEET TO THE POINT OF BEGINNING; THENCE RUN THE FOLLOWING COURSES AND DISTANCES ALONG THE SOUTH RIGHT OF WAY LINE OF WHITE CLAY PIT ROAD, AS RECORDED IN MAP BOOK 2, PAGES 146 THROUGH 156, PUBLIC RECORDS OF POLK COUNTY FLORIDA: NORTH 69°21'25" EAST, 47.30 FEET; SOUTH 89°17'17" EAST, 1240.44 FEET; NORTH 89°45'07" EAST, 1310.06 FEET TO A POINT ON THE WEST RIGHT OF WAY LINE OF DETOUR ROAD, AS RECORDED IN MAP BOOK 1, PAGES 14 THROUGH 17, AFORESAID PUBLIC RECORDS OF POLK COUNTY FLORIDA; THENCE RUN SOUTH 00°40'51" EAST ALONG SAID WEST RIGHT OF WAY LINE FOR A DISTANCE OF 641.71 FEET TO THE INTERSECTION OF SAID WEST LINE AND THE WESTERLY EXTENSION OF THE NORTH LINE OF THE SOUTH 1/2 OF THE SOUTHWEST 1/4 OF THE NORTHWEST 1/4 OF AFORESAID SECTION 10; THENCE RUN NORTH 89°18'18" EAST ALONG SAID WESTERLY EXTENSION AND THE NORTH LINE OF THE SOUTH 1/2 OF THE SOUTHWEST 1/4 OF THE NORTHWEST 1/4, ALSO BEING THE SOUTH LINE OF QUAIL RIDGE POINTE, AS RECORDED IN PLAT BOOK 107, PAGE 44, SAID PUBLIC RECORDS FOR A DISTANCE OF 1336.30 FEET TO THE NORTHEAST CORNER OF SAID SOUTH 1/2 OF THE SOUTHWEST 1/4 OF THE NORTHWEST 1/4, ALSO BEING THE SOUTHEAST CORNER OF SAID QUAIL RIDGE POINTE; THENCE RUN SOUTH 00°31'31" EAST ALONG THE EAST LINE OF THE SOUTH 1/2 OF THE SOUTHWEST 1/4 OF THE NORTHWEST 1/4 OF SAID SECTION 10 FOR A DISTANCE OF 692.63 FEET TO A POINT ON THE SOUTH RIGHT OF WAY LINE OF HUGHES ROAD, RECORDED IN MAP BOOK 9, PAGES 12 THROUGH 30, SAID PUBLIC RECORDS; THENCE RUN NORTH 87°44' 17" EAST ALONG SAID SOUTH RIGHT OF WAY LINE FOR A DISTANCE OF 400.19 FEET TO A POINT ON THE EAST LINE OF THE WEST 400 FEET OF THE NORTH 990 FEET OF THE NORTHEAST 1/4 OF THE SOUTHWEST 1/4 OF SAID SECTION 10, AS RECORDED IN OFFICIAL RECORDS BOOK 10582, PAGE 184, SAID PUBLIC RECORDS; THENCE DEPARTING SAID SOUTH RIGHT OF WAY LINE RUN SOUTH 00°30'19" EAST ALONG SAID EAST LINE FOR A DISTANCE OF 975.04 FEET TO THE SOUTHEAST CORNER OF SAID WEST 400 FEET OF THE NORTH 990 FEET; THENCE RUN SOUTH 89°13' 41" WEST ALONG THE SOUTH LINE OF SAID WEST 400 FEET OF THE NORTH 990 FEET FOR A DISTANCE OF 400.00 FEET TO THE SOUTHEAST CORNER OF SAID WEST 400 FEET OF THE NORTH 990 FEET ALSO BEING A POINT ON THE WEST LINE OF THE NORTHEAST 1/4 OF THE SOUTHWEST 1/4; THENCE RUN NORTH 00°30'19" WEST ALONG SAID WEST LINE FOR A DISTANCE OF 330.07 FEET TO THE SOUTHEAST CORNER OF THE NORTH 1/2 OF THE NORTHWEST 1/4 OF THE SOUTHWEST 1/4 OF SAID SECTION 10; THENCE RUN SOUTH 89°13'27" WEST ALONG THE SOUTH LINE OF SAID NORTH 1/2 OF THE NORTHWEST 1/4 OF THE SOUTHWEST 1/4 FOR A DISTANCE OF 1299.58 FEET TO A POINT ON THE EAST RIGHT OF WAY LINE OF AFORESAID DETOUR ROAD; THENCE RUN NORTH 00°57'39" WEST ALONG SAID EAST RIGHT OF WAY LINE FOR A DISTANCE OF 645.08 FEET TO A POINT ON THE SOUTH RIGHT OF WAY LINE OF AFORESAID HUGHES ROAD; THENCE RUN THE FOLLOWING COURSES AND DISTANCES ALONG SAID SOUTH RIGHT OF WAY LINE: SOUTH 89°17'27" WEST, 54.09 FEET; NORTH 88°08'19" WEST, 78.74 FEET; SOUTH 89°27'54" WEST, 100.02 FEET; NORTH 88°48'59" WEST, 300.01 FEET; NORTH 89°57'44" WEST, 100.00 FEET; NORTH 88°48'59" WEST, 100.00 FEET; NORTH 89°23'21" WEST, 300.00 FEET; NORTH 88°48'59" WEST, 200.01 FEET; NORTH 88°51'54" WEST, 109.31 FEET TO A POINT ON THE EAST LINE OF THE NORTHWEST 1/4 OF THE SOUTHEAST 1/4 OF AFORESAID SECTION 9; THENCE RUN SOUTH 00°34'36" EAST ALONG SAID EAST LINE FOR A DISTANCE OF 1318.27 FEET TO THE SOUTHEAST CORNER OF SAID NORTHWEST 1/4 OF THE SOUTHEAST 1/4; THENCE RUN NORTH 89°44'40" WEST ALONG THE SOUTH LINE OF SAID NORTHWEST 1/4 OF THE SOUTHEAST 1/4 FOR A DISTANCE OF 1351.96 FEET TO A POINT ON THE WEST RIGHT OF WAY LINE OF STATE ROAD 17 AS SHOWN ON FDOT RIGHT OF WAY MAP SECTION NO. 5029-RD (8), AFORESAID PUBLIC RECORDS; THENCE RUN SOUTH 00°33'34" EAST ALONG SAID WEST RIGHT OF WAY LINE FOR A DISTANCE OF 658.71

FEET TO A POINT ON THE SOUTH LINE OF THE NORTHEAST 1/4 OF THE SOUTHEAST 1/4 OF THE SOUTHWEST 1/4; THENCE RUN NORTH 89°39'18" WEST ALONG SAID SOUTH LINE FOR A DISTANCE OF 589.98 FEET TO A POINT ON THE EAST LINE OF THE DUKE ENERGY PROPERTY, AS RECORDED IN OFFICIAL RECORDS BOOK 2209, PAGE 0597, SAID PUBLIC RECORDS; THENCE RUN NORTH 03°05'06" WEST ALONG SAID EAST LINE FOR A DISTANCE OF 1963.50 FEET TO A POINT ON THE AFORESAID SOUTH RIGHT OF WAY LINE OF HUGHES ROAD; THENCE DEPARTING SAID EAST LINE RUN THE FOLLOWING COURSES AND DISTANCES ALONG SAID SOUTH RIGHT OF WAY LINE: SOUTH 89°30'32" EAST, 49.40 FEET; NORTH 00°39'47" EAST, 6.80 FEET; SOUTH 89°44'17" EAST, 100.00 FEET; SOUTH 89°30'32" EAST, 100.00 FEET; SOUTH 89°37'24" EAST, 100.00 FEET; SOUTH 89°03'02" EAST, 100.00 FEET; SOUTH 89°54'36" EAST, 100.00 FEET; SOUTH 86°11'47" EAST, 110.29 FEET; SOUTH 87°23'20" EAST, 83.13 FEET TO A POINT ON THE EAST RIGHT OF WAY LINE OF AFORESAID STATE ROAD 17; THENCE RUN NORTH 00°33'34" WEST ALONG SAID EAST RIGHT OF WAY LINE FOR A DISTANCE OF 1314.71 FEET TO THE POINT OF BEGINNING.

ADDITIONALLY, FOR PARCEL 272809000000011020, SE1/4 OF NE1/4 OF NE1/4 LESS MAINT R/W. CONTAINING 206.56 ACRES, MORE OR LESS.



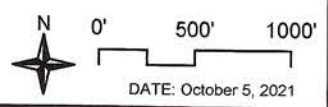
PARCEL 410: ANNEXED INTO THE TOWN OF LAKE HAMILTON VIA TOWN ORDINANCE O-21-15, APPROVED 9/7/2021.

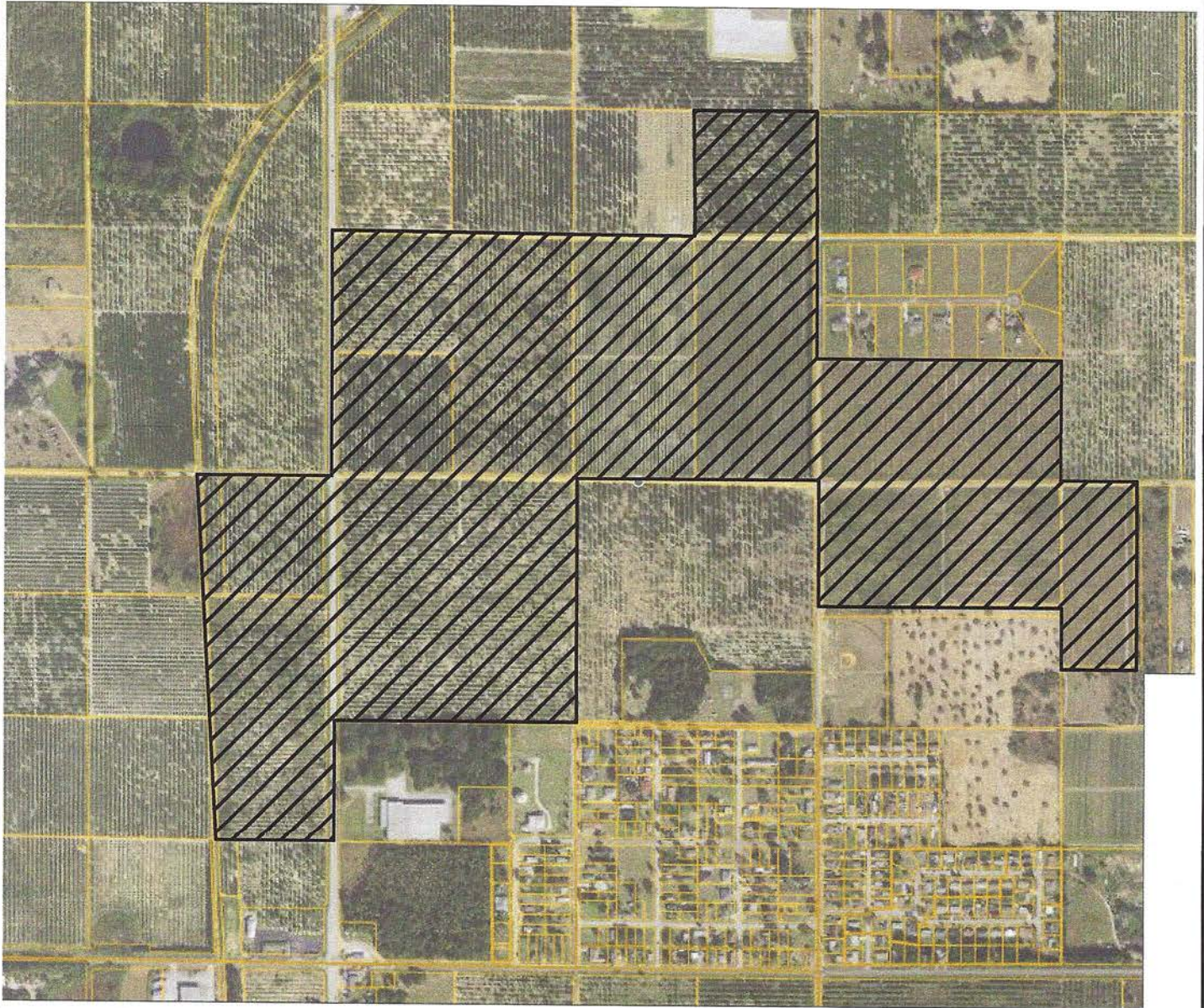
MAP ID	PARCELID	NAME	JURISDICTION
320	27280900000023010	ATLANTICBLUE CAPITAL, LLC	LAKE HAMILTON
321	27280900000012020	FLOYD ROAD INVESTMENT, LLC	LAKE HAMILTON
322	27280900000012010	ABC IRA LLC	LAKE HAMILTON
380	272810000000034020	CASSIDY HOLDINGS LLC	LAKE HAMILTON
381	272810000000043010	CASSIDY HOLDINGS LLC	LAKE HAMILTON
382	272810000000041030	CASSIDY HOLDINGS LLC	LAKE HAMILTON
396	272809000000014030	L DICKS INC	LAKE HAMILTON
397	272809000000014020	L DICKS INC	LAKE HAMILTON
406	272809000000041050	L DICKS INC	LAKE HAMILTON
407	272809000000041040	L DICKS INC	LAKE HAMILTON
410	272809000000011020	DICKS FAMILY LIMITED PARTNERSHIP	LAKE HAMILTON
415	272809000000041020	TURNER INVESTMENTS LTD	LAKE HAMILTON

SECTS 9 & 10,
T27S, R28E

APPROX. CDD BOUNDARY
AREA - 206.56 ± AC.

EXHIBIT 1 - LOCATION MAP SCENIC TERRACE SOUTH CDD

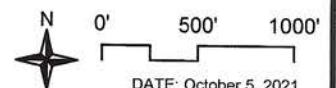




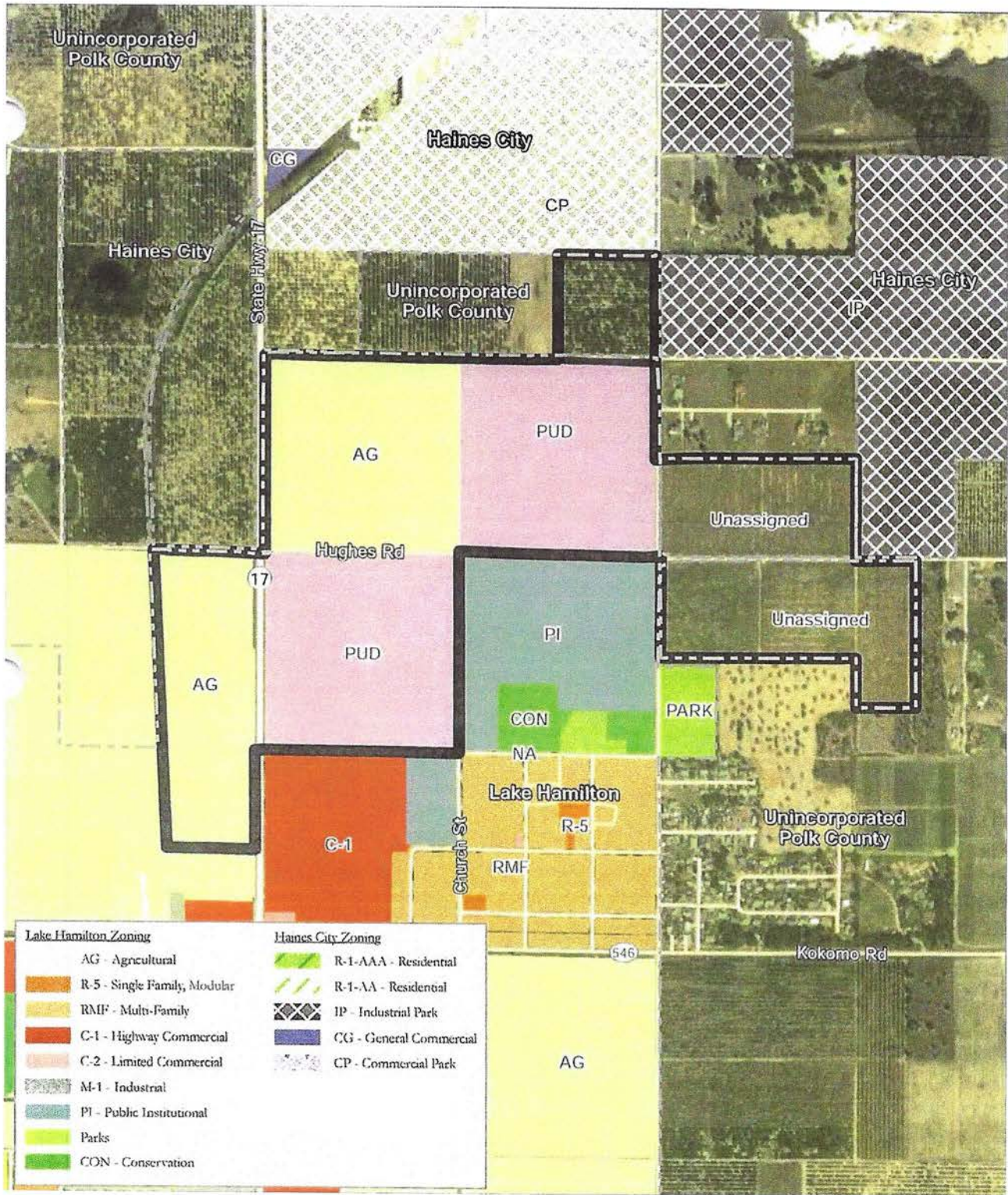
SECTS 9 & 10,
T27S, R28E

APPROX. CDD BOUNDARY
AREA - 206.56 ± AC.

EXHIBIT 3 - BOUNDARY MAP SCENIC TERRACE SOUTH CDD



DATE: October 5, 2021

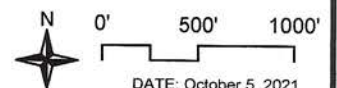


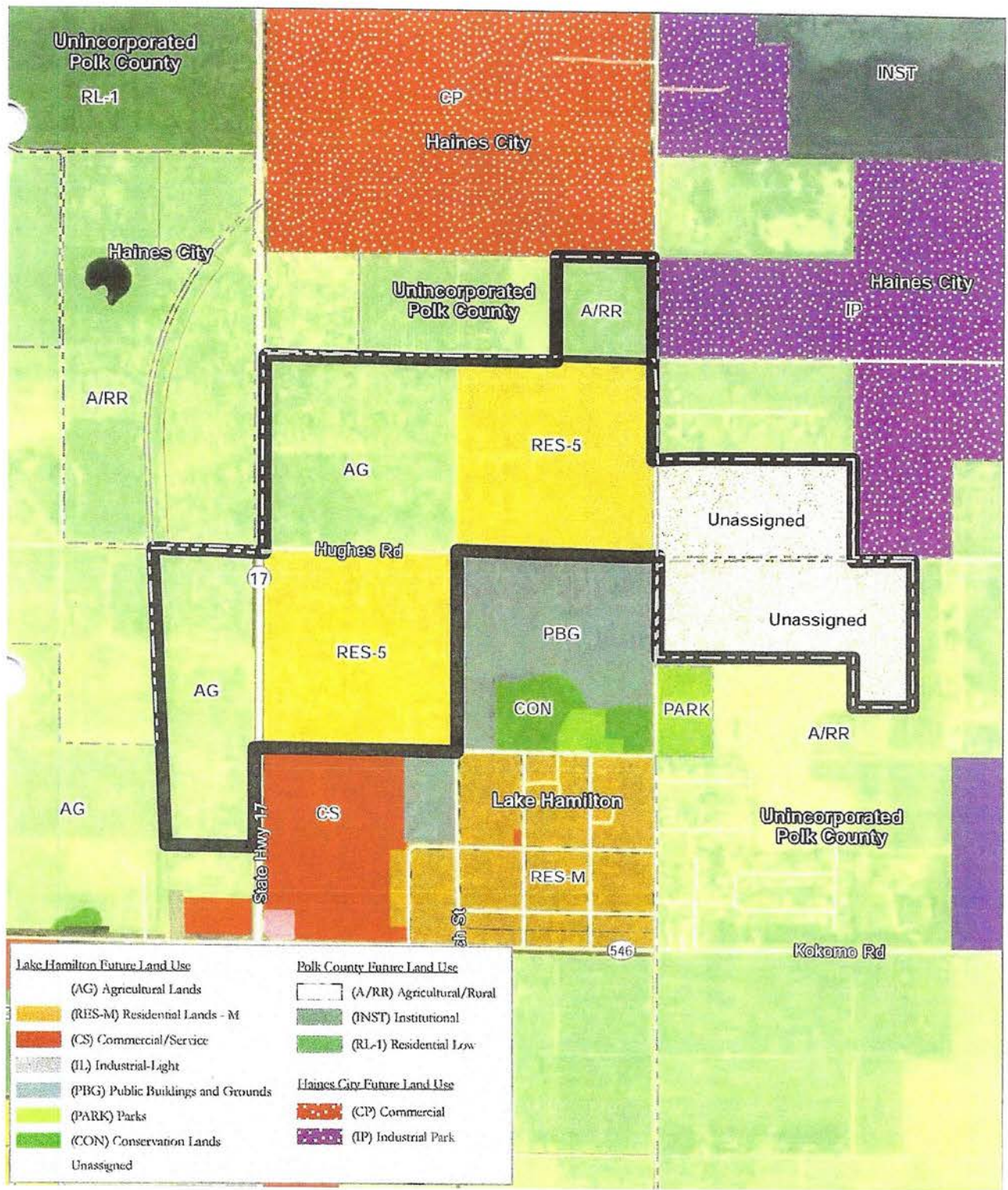
Lake Hamilton Zoning	Haines City Zoning
AG - Agricultural	R-1-AAA - Residential
R-5 - Single Family, Modular	R-1-AA - Residential
RMF - Multi-Family	IP - Industrial Park
C-1 - Highway Commercial	CG - General Commercial
C-2 - Limited Commercial	CP - Commercial Park
M-1 - Industrial	
PI - Public Institutional	
Parks	
CON - Conservation	

SECTS 9 & 10,
T27S, R28E

APPROX. CDD BOUNDARY
AREA - 206.56 ± AC.

EXHIBIT 4 - EXISTING LAND USE MAP SCENIC TERRACE SOUTH CDD

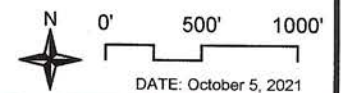


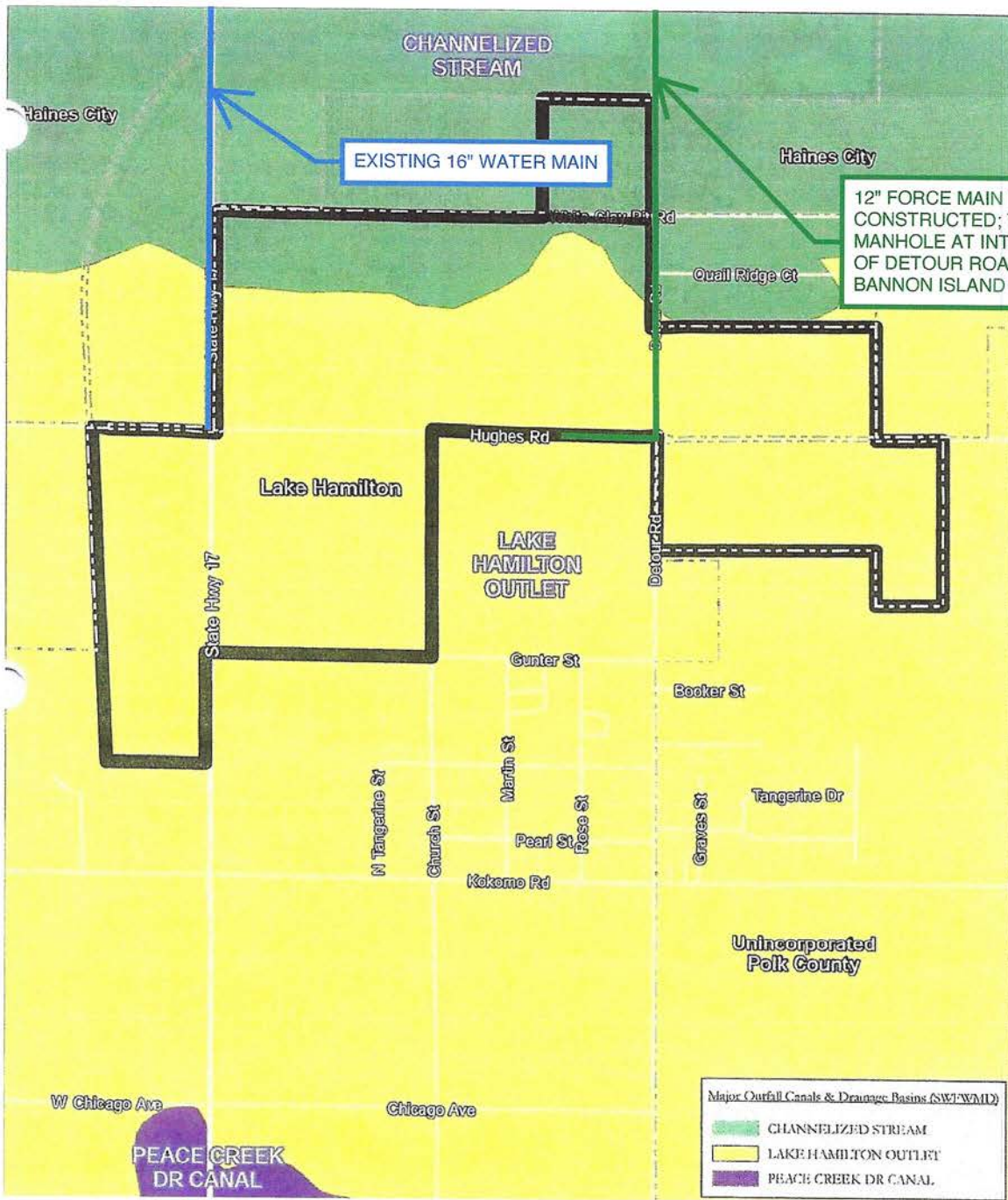


SECTS 9 & 10,
T27S, R28E

APPROX. CDD BOUNDARY
AREA - 206.56 ± AC.

**EXHIBIT 5 - EXISTING FUTURE LAND
USE MAP
SCENIC TERRACE SOUTH CDD**

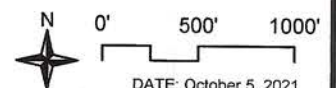




SECTS 9 & 10,
T27S, R28E

APPROX. CDD BOUNDARY
AREA - 206.56 ± AC.

**EXHIBIT 6 - DRAINAGE AND UTILITIES
SCENIC TERRACE SOUTH CDD**



DATE: October 5, 2021

**Exhibit 7A - Cost Estimate
Scenic Terrace South CDD**

Facility	Phase 1 2021-2023	Phase 2 2023-2024	Total Lots (744 Lots)
Earthwork	\$ 1,454,030	\$ 891,179	\$ 2,345,209
Roadway	\$ 2,797,550	\$ 1,714,627	\$ 4,512,177
Stormwater System	\$ 2,147,198	\$ 1,316,025	\$ 3,463,223
Wastewater System	\$ 2,213,168	\$ 1,356,458	\$ 3,569,626
Potable Water Distribution System	\$ 1,253,457	\$ 768,248	\$ 2,021,705
Reclaimed Water Distribution System	\$ 801,396	\$ 491,178	\$ 1,292,574
Electrical Undergrounding	\$ 1,095,850	\$ 671,650	\$ 1,767,500
Landscape & Hardscape	\$ 1,342,223	\$ 822,653	\$ 2,164,876
Amenities (Cabana, Tot Lots, and Recreation Areas)	\$ 930,000	\$ 570,000	\$ 1,500,000
Offsite Improvements	\$ 4,491,589	\$ -	\$ 4,491,589
Subtotal	\$ 18,526,461	\$ 8,602,018	\$ 27,128,479
Professional Fees (10%)			\$ 2,712,848
Subtotal			\$ 29,841,327
Contingency (10%)			\$ 2,984,133
Total			\$ 32,825,460

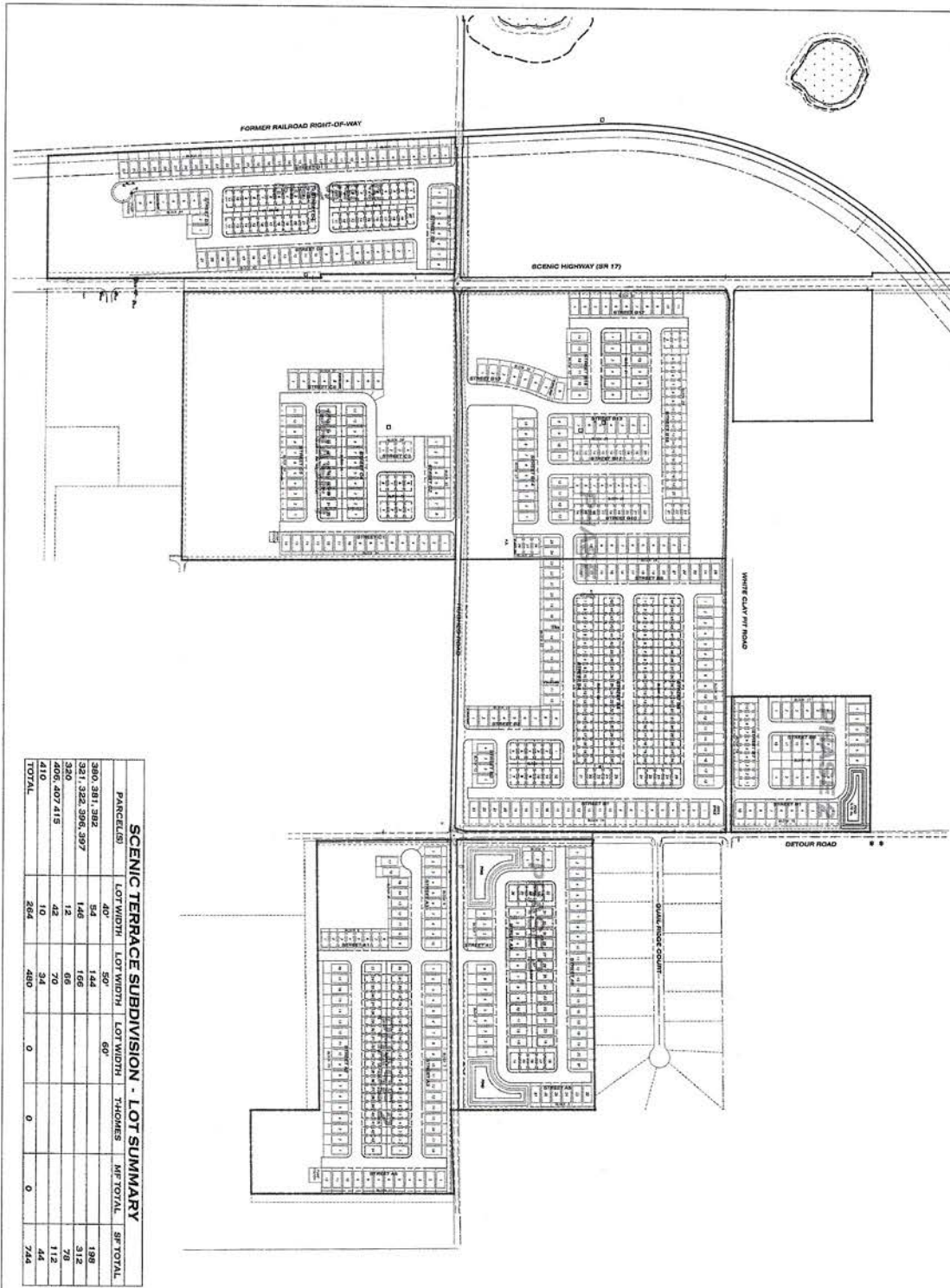
Notes:

1. Infrastructure consists of public roadway improvements, Stormwater management facilities, master sanitary sewer lift station and utilities, entry feature, landscaping and signage, and public neighborhood parks, all of which will be located on land owned by or subject to a permanent easement in favor of the District or another governmental entity.
2. Excludes grading of each lot in conjunction with home construction, which will be provided by home builder.
3. Includes Stormwater pond excavation. Does not include the cost of transportation of fill for use of private lots.
4. Includes sub-grade, base, asphalt paving, curbing, and civil/site engineering.
5. Includes subdivision infrastructure and civil/site engineering.
6. Stormwater does not include grading associated with building pads.
7. Estimates are based on 2020 cost.
8. Includes entry features, signage, hardscape, landscape, irrigation and fencing.
9. CDD will enter into a Lighting Agreement with Duke Energy for the street light poles and lighting service. Includes only the cost of undergrounding.
10. Estimates based on 744 lots.
11. The costs associated with the infrastructure are a master cost and is effectively shared by the entire project (All phases).

Scenic Terrace South CDD
 Exhibit 7B - Summary of Proposed District Facilities

District Infrastructure	Construction	Ownership	Capital Financing*	Operation and Maintenance
Stormwater Facilities	District	District	District Bonds	District
Lift Stations/Water/Sewer	District	Lake Hamilton	District Bonds	Lake Hamilton/Haines City
Street Lighting	District	District	District Bonds	District/Duke Energy
Onsite Road Construction	District	District	District Bonds	District
Offsite Road Construction	District	Lake Hamilton	District Bonds	Lake Hamilton/Polk County
Entry Feature & Signage	District	District	District Bonds	District
Recreation Facilities/Amenities	District	District	District Bonds	District

*Costs not funded by bonds will be funded by the developer.



SECTS 9 & 10,
T27S, R28E

APPROX. CDD BOUNDARY
AREA - 206.56 ± AC.

EXHIBIT 8 - SITE PLAN SCENIC TERRACE SOUTH CDD

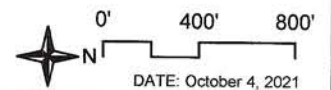


Exhibit C

**Section 189, Florida
Statutes**

The 2025 Florida Statutes

Title XIII
PLANNING AND
DEVELOPMENT

Chapter 189
UNIFORM SPECIAL DISTRICT ACCOUNTABILITY
ACT

[View Entire
Chapter](#)

189.08 Special district public facilities report. –

(1) It is declared to be the policy of this state to foster coordination between special districts and local general-purpose governments as those local general-purpose governments develop comprehensive plans under the Community Planning Act, pursuant to part II of chapter 163.

(2) Each independent special district shall submit to each local general-purpose government in which it is located a public facilities report and an annual notice of any changes. The public facilities report shall specify the following information:

(a) A description of existing public facilities owned or operated by the special district, and each public facility that is operated by another entity, except a local general-purpose government, through a lease or other agreement with the special district. This description shall include the current capacity of the facility, the current demands placed upon it, and its location. This information shall be required in the initial report and updated every 7 years at least 12 months before the submission date of the evaluation and appraisal notification letter of the appropriate local government required by s. 163.3191. The department shall post a schedule on its website, based on the evaluation and appraisal notification schedule prepared pursuant to s. 163.3191(6), for use by a special district to determine when its public facilities report and updates to that report are due to the local general-purpose governments in which the special district is located.

(b) A description of each public facility the district is building, improving, or expanding, or is currently proposing to build, improve, or expand within at least the next 7 years, including any facilities that the district is assisting another entity, except a local general-purpose government, to build, improve, or expand through a lease or other agreement with the district. For each public facility identified, the report shall describe how the district currently proposes to finance the facility.

(c) If the special district currently proposes to replace any facilities identified in paragraph (a) or paragraph (b) within the next 10 years, the date when such facility will be replaced.

(d) The anticipated time the construction, improvement, or expansion of each facility will be completed.

(e) The anticipated capacity of and demands on each public facility when completed. In the case of an improvement or expansion of a public facility, both the existing and anticipated capacity must be listed.

(3) A special district proposing to build, improve, or expand a public facility which requires a certificate of need pursuant to chapter 408 shall elect to notify the appropriate local general-purpose government of its plans either in its 7-year plan or at the time the letter of intent is filed with the Agency for Health Care Administration pursuant to s. 408.039.

(4) Those special districts building, improving, or expanding public facilities addressed by a development order issued to the developer pursuant to s. 380.06 may use the most recent local government report required by s. 380.06(6) and submitted by the developer, to the extent the annual report provides the information required by subsection (2).

(5) The facilities report shall be prepared and submitted within 1 year after the district's creation.

(6) For purposes of the preparation or revision of local government comprehensive plans required pursuant to s. 163.3161, a special district public facilities report may be used and relied upon by the local general-purpose government or governments within which the special district is located.

(7) Any special district that has completed the construction of its public facilities, improvements to its facilities, or its development is not required to submit a public facilities report, but must submit the information required by paragraph (2)(a).

(8) A special district plan of reclamation required pursuant to general law or special act, including, but not limited to, a plan prepared pursuant to chapter 298 which complies with the requirements of subsection (2), shall satisfy the requirement for a public facilities report. A water management and control plan adopted pursuant to s. 190.013, which complies with the requirements of subsection (2), satisfies the requirement for a public facilities report for the facilities the plan addresses.

(9) The Reedy Creek Improvement District is not required to provide the public facilities report as specified in subsection (2).

(10) Each deepwater port listed in s. 403.021(9)(b) shall satisfy the requirements of subsection (2) by submitting to the appropriate local government a comprehensive master plan as required by s. 163.3178(2)(k). All other ports shall submit a public facilities report as required in subsection (2).

History.—s. 20, ch. 89-169; s. 26, ch. 95-280; s. 16, ch. 97-255; s. 17, ch. 99-8; s. 38, ch. 2011-139; s. 15, ch. 2012-99; s. 35, ch. 2014-22; s. 9, ch. 2018-158; s. 6, ch. 2023-31.

Note.—Former s. 189.415.